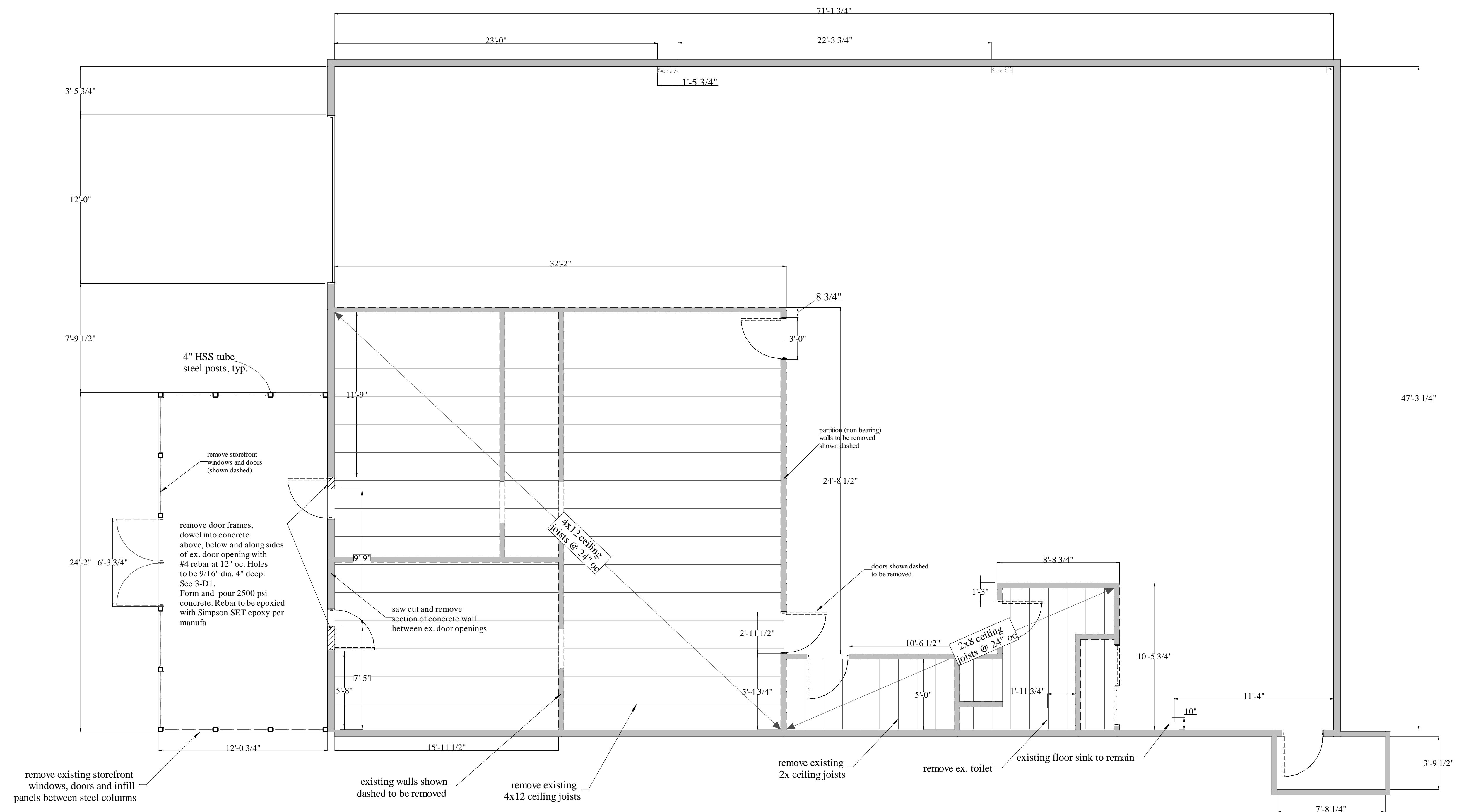


STRUCTURAL
 ENGINEERING BY:

KENT ENGINEERING, INC.
 Robert Kent
 3608 Aaron Drive
 Santa Rosa, CA 95404
 ph: 707-526-7956
 fax: 707-526-9138

Red Whale Coffee Roastery
 169 Paul Drive
 San Rafael, CA 94903

AS BUILT
 FLOOR &
 DEMO
 PLAN



REVISIONS

NO. DATE

Date Issued
 February 15, 2013

A 1.0

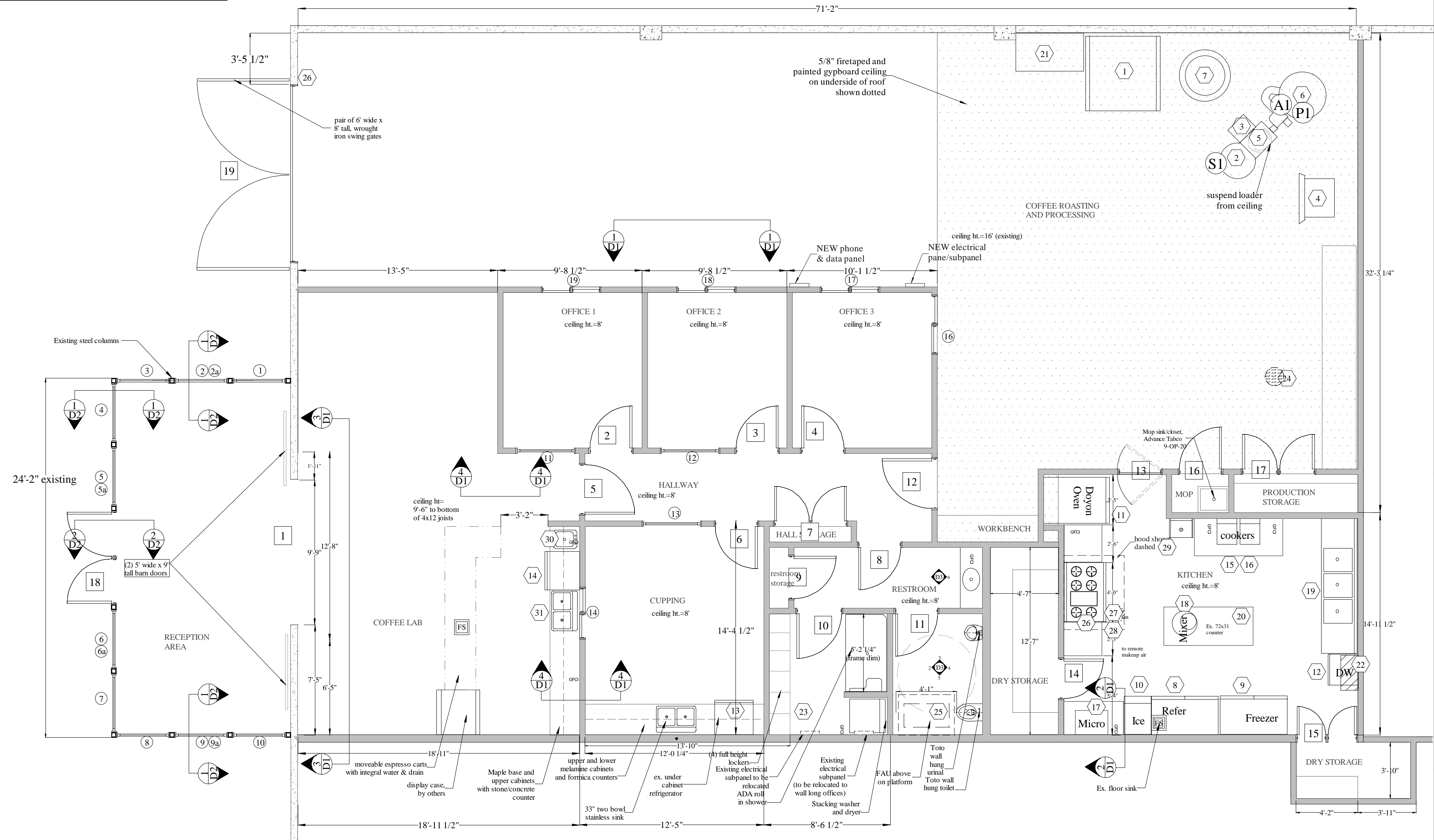
Scale: 1/4"=1'

RED WHALE COFFEE MAJOR EQUIPMENT LIST

Equipment #	Equipment Name	Location	Input BTU (if gas)	Electrical Requirements	Plug-in or Hardwired	Circuit Breaker Size (Amps)	Voltage
1	Weigh fill Bagger	south wall		7A@120V	plug in	20	120
2	Roaster	south west corner	63,000 BTU	10.5A@110V	plug into podium	N/A	120
3	Podium	roaster brans		(2) 20A 110V circuits	plug	(2) 20	120
4	De Stoner	next to roaster		10A@110V	plug	20	120
5	Coffee Loader	hangs above roaster		15A@110V	plug	20	120
6	Catalytic converter (Oxidizer)	attached to roaster	400,000 BTU	3.5A@120V	plug	20	120
7	Grinder	between roaster and bagger		3HP single phase 230V	plug	20	240
8	Turbo Air Refrigerator	kitchen		11.2A@110V	plug	20	120
9	Turbo Air Freezer	kitchen		10.5A@110V	plug	20	120
10	Scotsman ice maker	kitchen		14A@115V	plug	20	120
11	Doyon baking oven	kitchen	65,000 BTU	17A@240V	plug	30	240
12	Moyer delbel dishwasher	kitchen		38A@230V	plug	50	240
13	Turbo Air refer under cab	cupping room		6.6A@115V	plug	20	120
14	Turbo Air refer under cab	coffee lab		6.6A@115V	plug	20	120
15	Tarrison induction cooker (#1)	kitchen		15A @ 208V	plug	20	240
16	Tarrison induction cooker (#2)	kitchen		15A @ 208V	plug	20	240
17	Microwave	kitchen		8A@120V	plug	20	120
18	Mixer	kitchen		8A@120V	plug	20	120
19	Three pot sink	kitchen		N/A	N/A	N/A	N/A
20	Roll around counters	kitchen		N/A	N/A	N/A	N/A
21	Counters	south wall, next to bagger		N/A	N/A	N/A	N/A
22	On Demand Water Heater	east wall of kitchen	200,000 BTU	4A@120v	plug in	20	120
23	Force Air Furnace	offices, cupping and lab	100,000 BTU	8A@120V	plug in	20	120
24	Ex. Fan only -roof top AC	roasting area		10A@110V	hardwired	20	120
25	Stacked Washer & Dryer	Shower & Lockers	25,000 BTU	10A@110V	plug in	20	120
26	48" commercial gas range	kitchen	272,000 BTU	3.8A@110V	plug in	20	120
27	60" x 48" hood	kitchen		15A@110V	plug in	20	120
28	Fire supression system	kitchen		N/A	N/A	N/A	N/A
29	Hand washing sink	kitchen		N/A	N/A	N/A	N/A
30	Hand washing sink	coffee lab		N/A	N/A	N/A	N/A
31	33" dishwashing sink	coffee lab		N/A	N/A	N/A	N/A
32	AC condenser for offices	Roof		27A@220V (operating)	hardwired	40	220

Window Mark	Location	Size	Window Type	Frame Type
1	Storefront	4'-0" x 4'-0"	thermal pane, fixed	anodized aluminum
2	Storefront	4'-0" x 3'-0"	thermal pane, fixed	anodized aluminum
2a	Storefront	4'-0" x 1'-0"	thermal pane, transom above 2	anodized aluminum
3	Storefront	4'-0" x 4'-0"	thermal pane, fixed	anodized aluminum
4	Storefront	4'-0" x 4'-0"	thermal pane, fixed	anodized aluminum
5	Storefront	4'-0" x 3'-0"	thermal pane, fixed	anodized aluminum
5a	Storefront	4'-0" x 1'-0"	thermal pane, transom above 5	anodized aluminum
6	Storefront	4'-0" x 3'-0"	thermal pane, fixed	anodized aluminum
6a	Storefront	4'-0" x 1'-0"	thermal pane, transom above 6	anodized aluminum
7	Storefront	4'-0" x 4'-0"	thermal pane, fixed	anodized aluminum
8	Storefront	4'-0" x 4'-0"	thermal pane, fixed	anodized aluminum
9	Storefront	4'-0" x 3'-0"	thermal pane, fixed	anodized aluminum
9a	Storefront	4'-0" x 1'-0"	thermal pane, transom above 9	anodized aluminum
10	Storefront	4'-0" x 4'-0"	thermal pane, fixed	anodized aluminum
11	Office 1	4'-0" x 4'-0"	single pane, fixed	anodized aluminum
12	Office 2	4'-0" x 4'-0"	single pane, fixed	anodized aluminum
13	Cupping	4'-0" x 4'-0"	single pane, fixed	anodized aluminum
14	Coffee to Cupping Room	3'-6" x 4'-0"	single pane, horizontal slider	anodized aluminum
15	not used			
16	Office 3	4'-0" x 4'-0"	single pane, horizontal slider	anodized aluminum
17	Office 3	4'-0" x 4'-0"	single pane, horizontal slider	anodized aluminum
18	Office 2	4'-0" x 4'-0"	single pane, horizontal slider	anodized aluminum
19	Office 1	4'-0" x 4'-0"	single pane, horizontal slider	anodized aluminum

Door Mark	Location	Size	Door Type	Frame Type	Hardware
1	Coffee Lab	10'x8' (pair)	Custom barn door on overhead track	none	N/A
2	Office 1	3'-0" x 7'-0"	solid core slab, paint grade	hollow metal	Schalge Jupiter 626, passage
3	Office 2	3'-0" x 7'-0"	solid core slab, paint grade	hollow metal	Schalge Jupiter 626, passage
4	Office 3	3'-0" x 7'-0"	solid core slab, paint grade	hollow metal	Schalge Jupiter 626, keyed entry
5	Hallway	3'-6" x 7'-0"	solid core slab, paint grade	hollow metal	Schalge Jupiter 626, keyed entry
6	Cupping	3'-0" x 7'-0"	solid core slab, paint grade	hollow metal	Schalge Jupiter 626, passage
7	Storage	pr 2'-6" x 7'-0"	solid core slab, paint grade	hollow metal	Schalge Jupiter 626, dummies with ball catches
8	Restroom	3'-0" x 7'-0"	solid core slab, paint grade	hollow metal	Schalge Jupiter 626, passage
9	Restroom storage	3'-0" x 7'-0"	solid core slab, paint grade	hollow metal	Schalge Jupiter 626, passage
10	Locker room	3'-0" x 7'-0"	solid core slab, paint grade	hollow metal	Schalge Jupiter 626, privacy
11	Toilet room	3'-0" x 7'-0"	solid core slab, paint grade	hollow metal	Schalge Jupiter 626, privacy
12	Coffee Production to office	3'-6" x 7'-0"	solid core slab, paint grade	hollow metal	Schalge Jupiter 626, passage
13	Kitchen	3'-0" x 7'-0"	lightweight aluminum with window, double acting hinges	hollow metal	N/A
14	Large kitchen storage	3'-0" x 7'-0"	solid core slab, paint grade	hollow metal	Schalge Jupiter 626, keyed entry
15	Small kitchen storage	pr 2'-0" x 7'-0"	solid core slab, paint grade	hollow metal	Schalge Jupiter 626, keyed entry
16	Mop room	3'-0" x 7'-0"	solid core slab, paint grade	hollow metal	Schalge Jupiter 626, passage
17	Production storage	pr 2'-6" x 7'-0"	solid core slab, paint grade	hollow metal	Schalge Jupiter 626, dummies with ball catches
18	Storefront	3'-0" x 7'-6"	aluminum and glass entry doors as part of storefront system	anodized aluminum	deabolt 626 finish
19	Swing Gates	pr. 6'-0" x 8'-0"	steel gate with 3'0 wide pedestrian door built into one side		N/A



STRUCTURAL ENGINEERING BY:

KENT ENGINEERING, INC.
Robert Kent
3608 Aaron Drive
Santa Rosa, CA 95404
ph: 707-526-7956
fax: 707-526-9138

Red Whale Coffee Roastery
169 Paul Drive
San Rafael, CA 94903

FLOOR PLAN & SCHEDULES

REVISIONS

NO. DATE

Date Issued

February 15, 2013

A 1.1

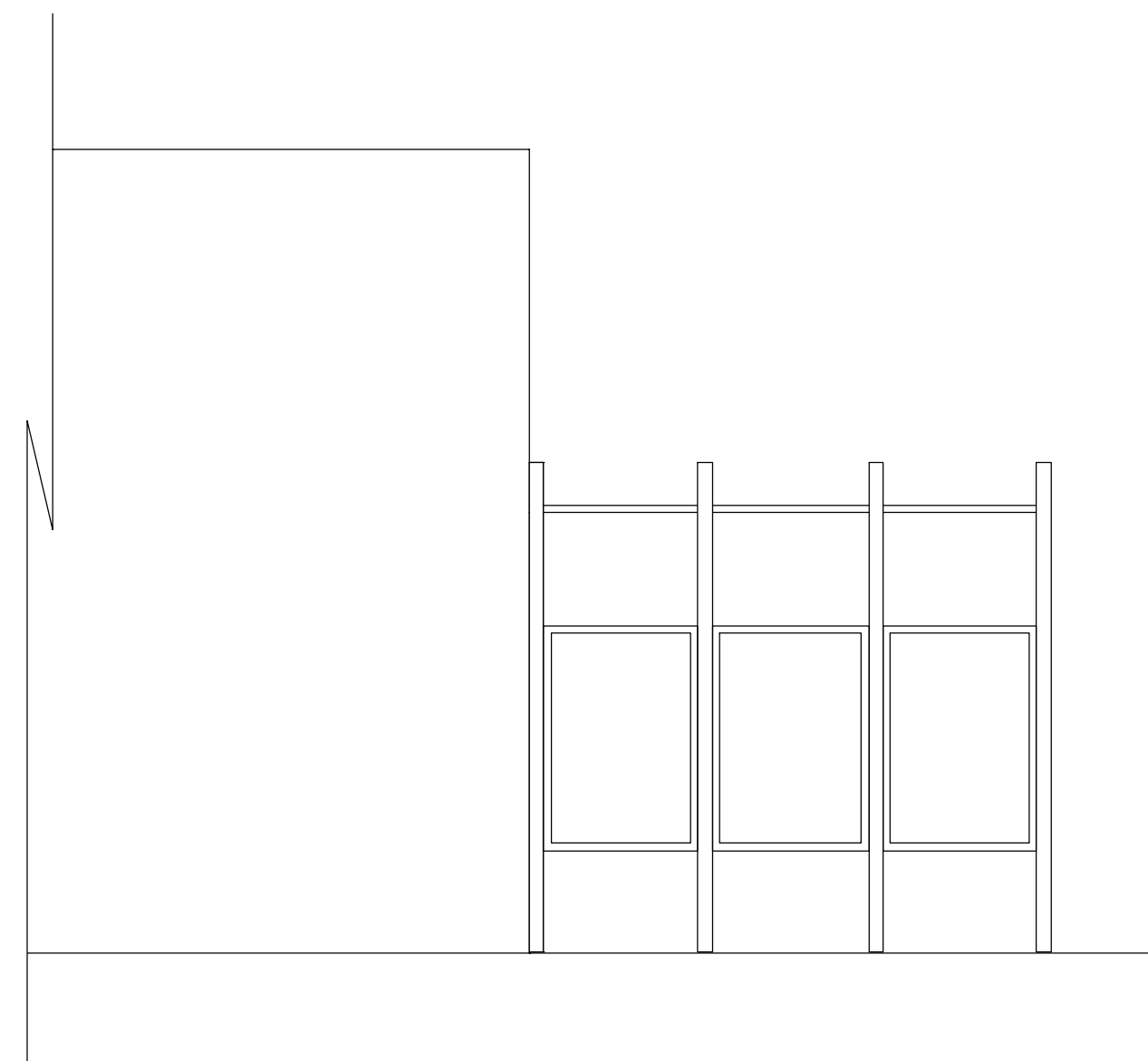
Scale: 1/4"=1'

STRUCTURAL
 ENGINEERING BY:

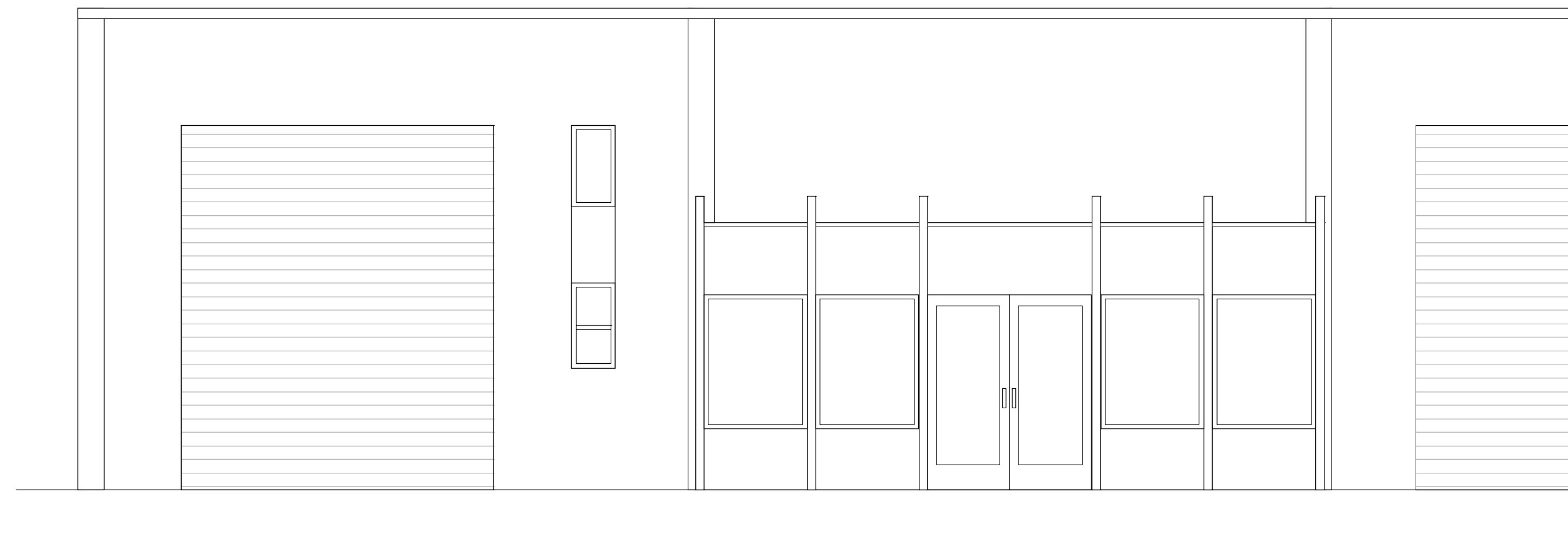
KENT ENGINEERING, INC.
 Robert Kent
 3608 Aaron Drive
 Santa Rosa, CA 95404
 ph: 707-526-7956
 fax: 707-526-9138

Red Whale Coffee Roastery
 169 Paul Drive
 San Rafael, CA 94903

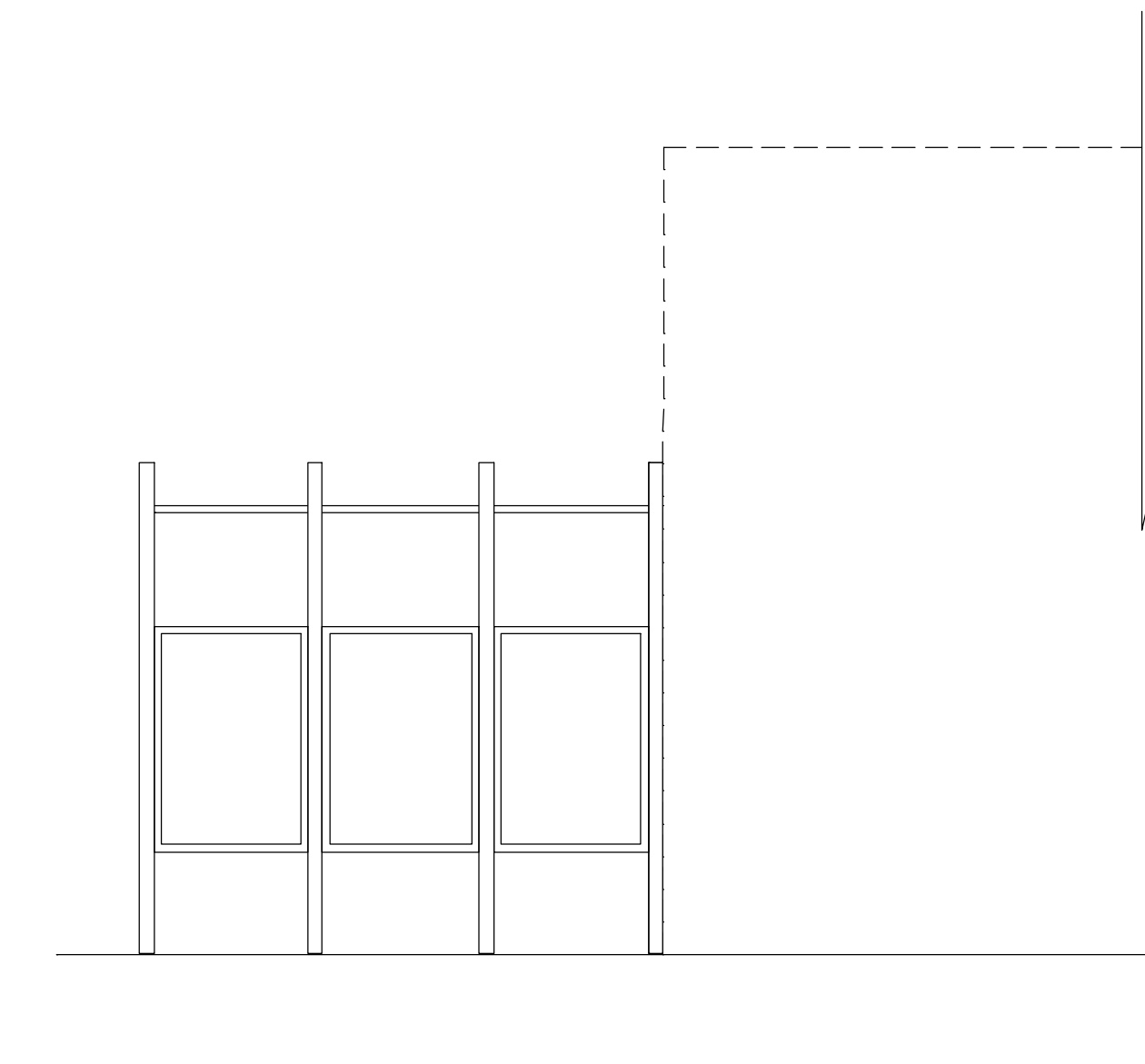
**EXISTING &
 PROPOSED
 EXTERIOR
 ELEVATIONS**



Ex. south elevation

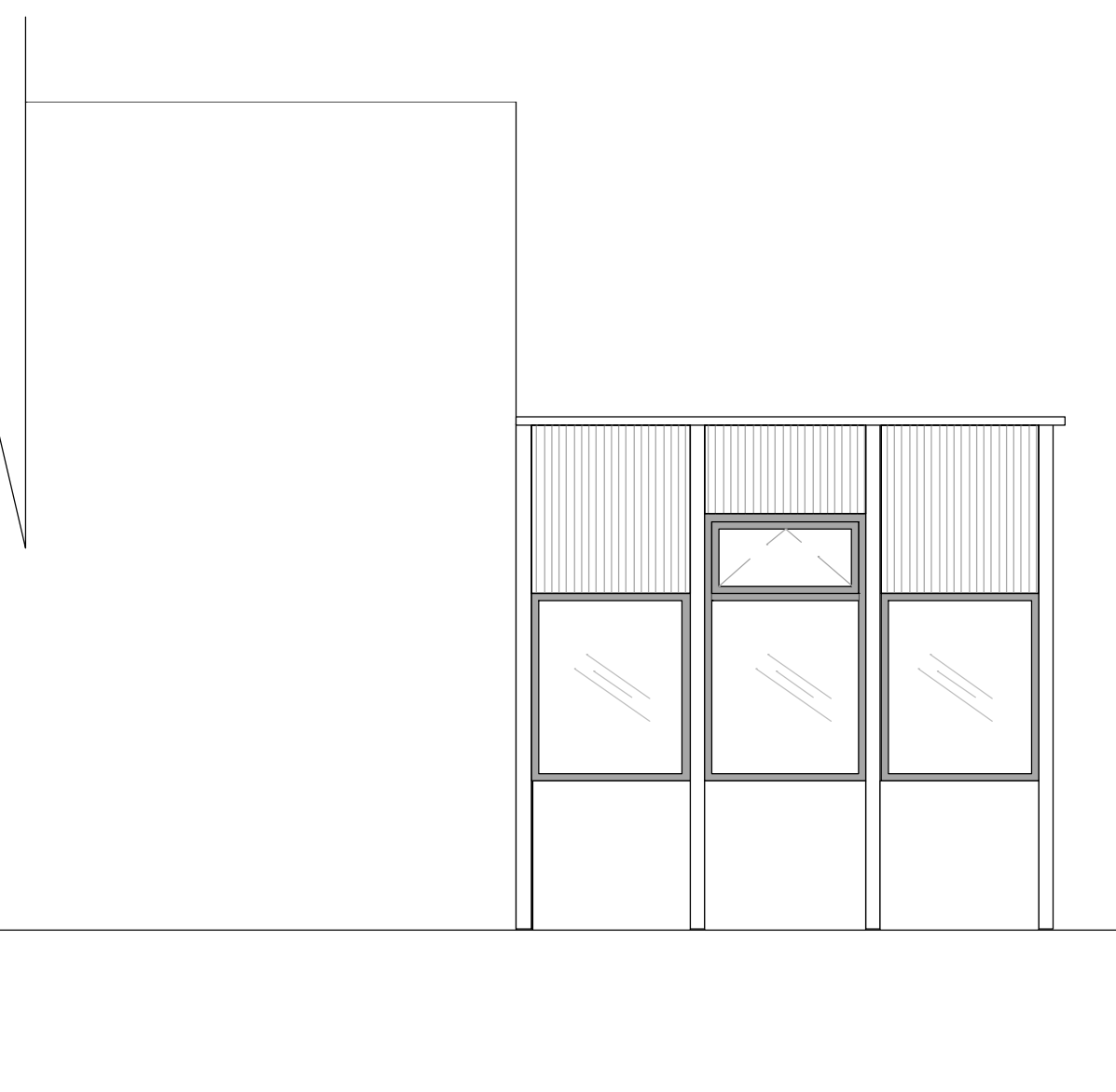


Ex. east elevation



Ex. north elevation

EXISTING ELEVATIONS



173 Paul Drive

REVISED ELEVATIONS

REVISIONS

NO. DATE

Date Issued

February 15, 2013

A 2.0

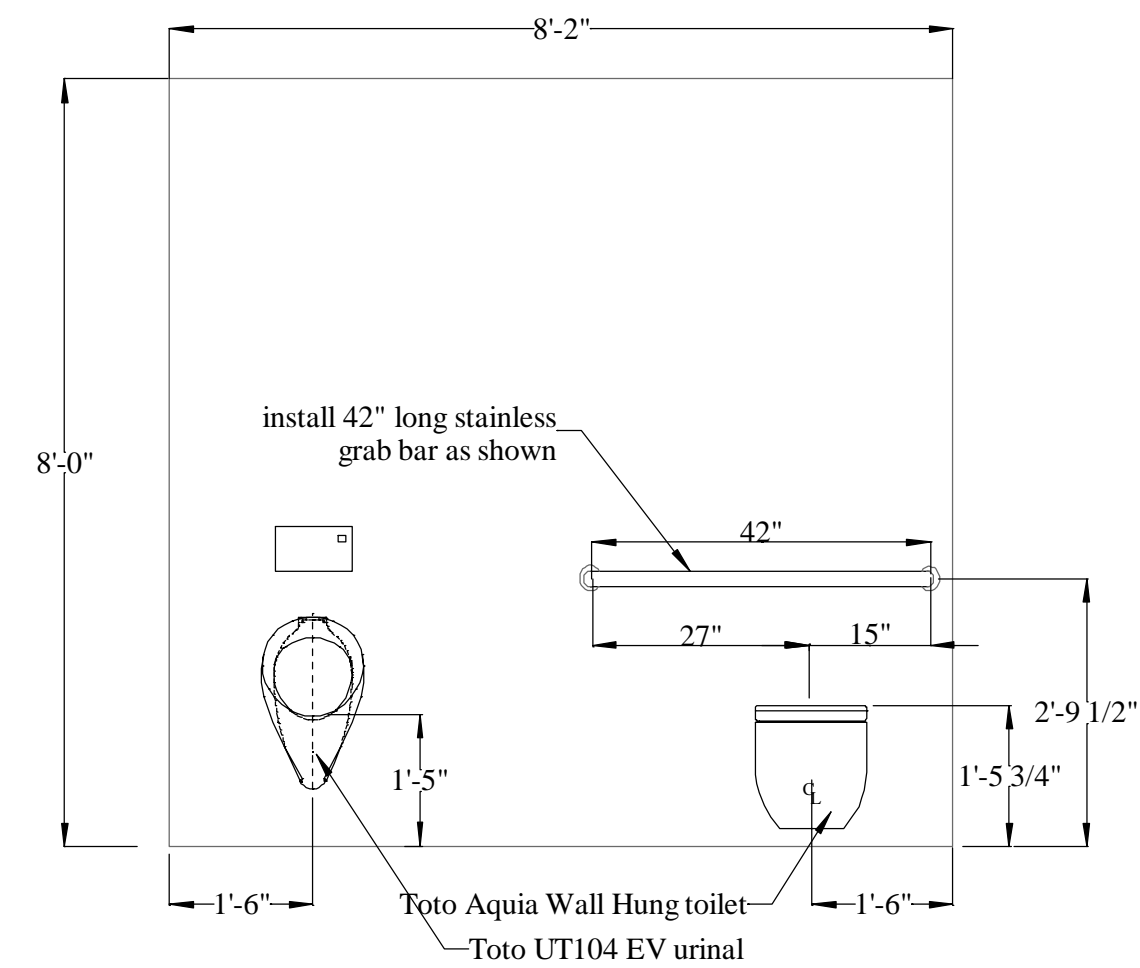
Scale: 1/4"=1'

STRUCTURAL
 ENGINEERING BY:

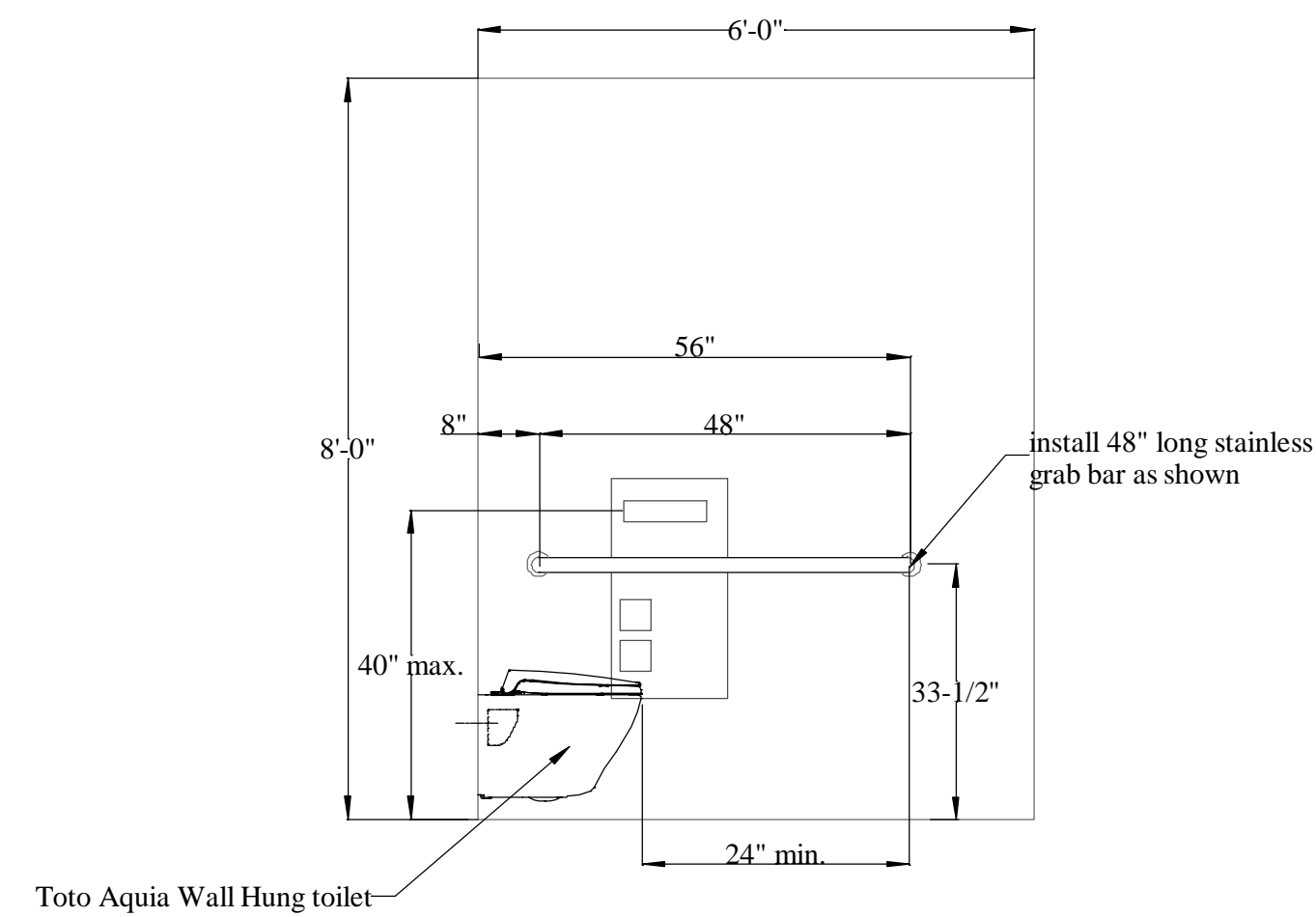
KENT ENGINEERING, INC.
 Robert Kent
 3608 Aaron Drive
 Santa Rosa, CA 95404
 ph: 707-526-7956
 fax: 707-526-9138

Red Whale Coffee Roastery
 169 Paul Drive
 San Rafael, CA 94903

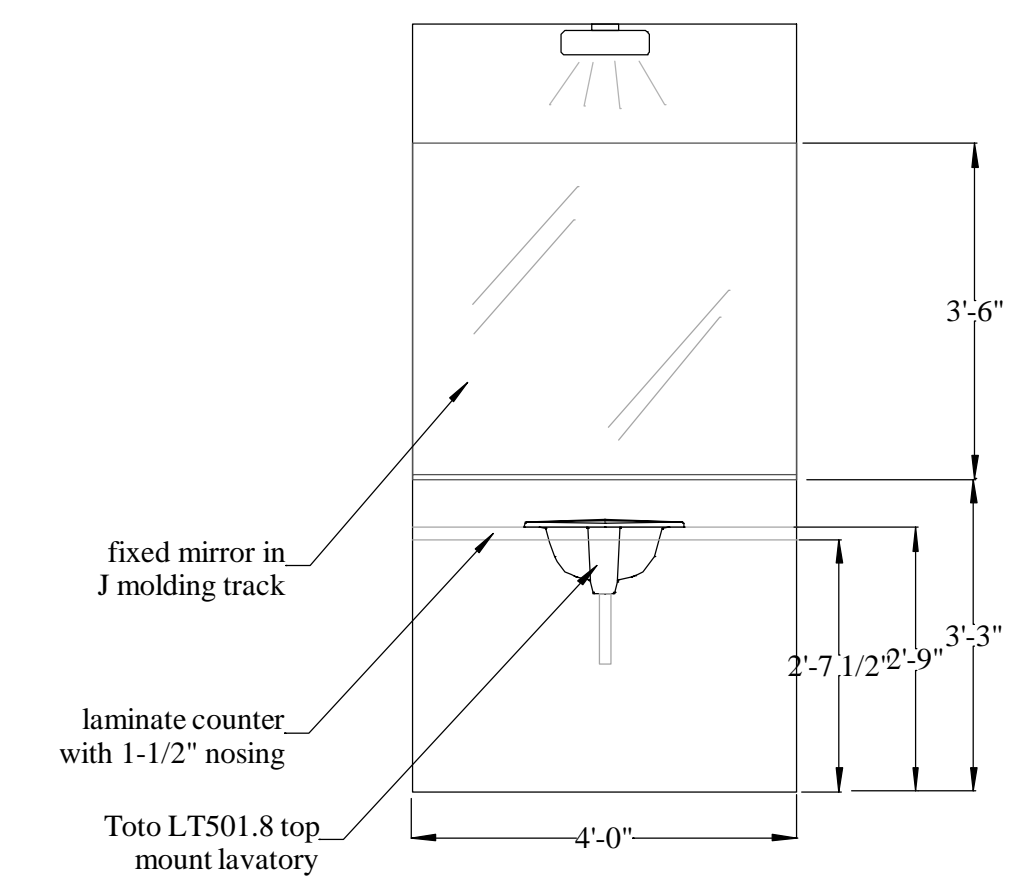
RESTROOM
 PLAN
 &
 ELEVATIONS



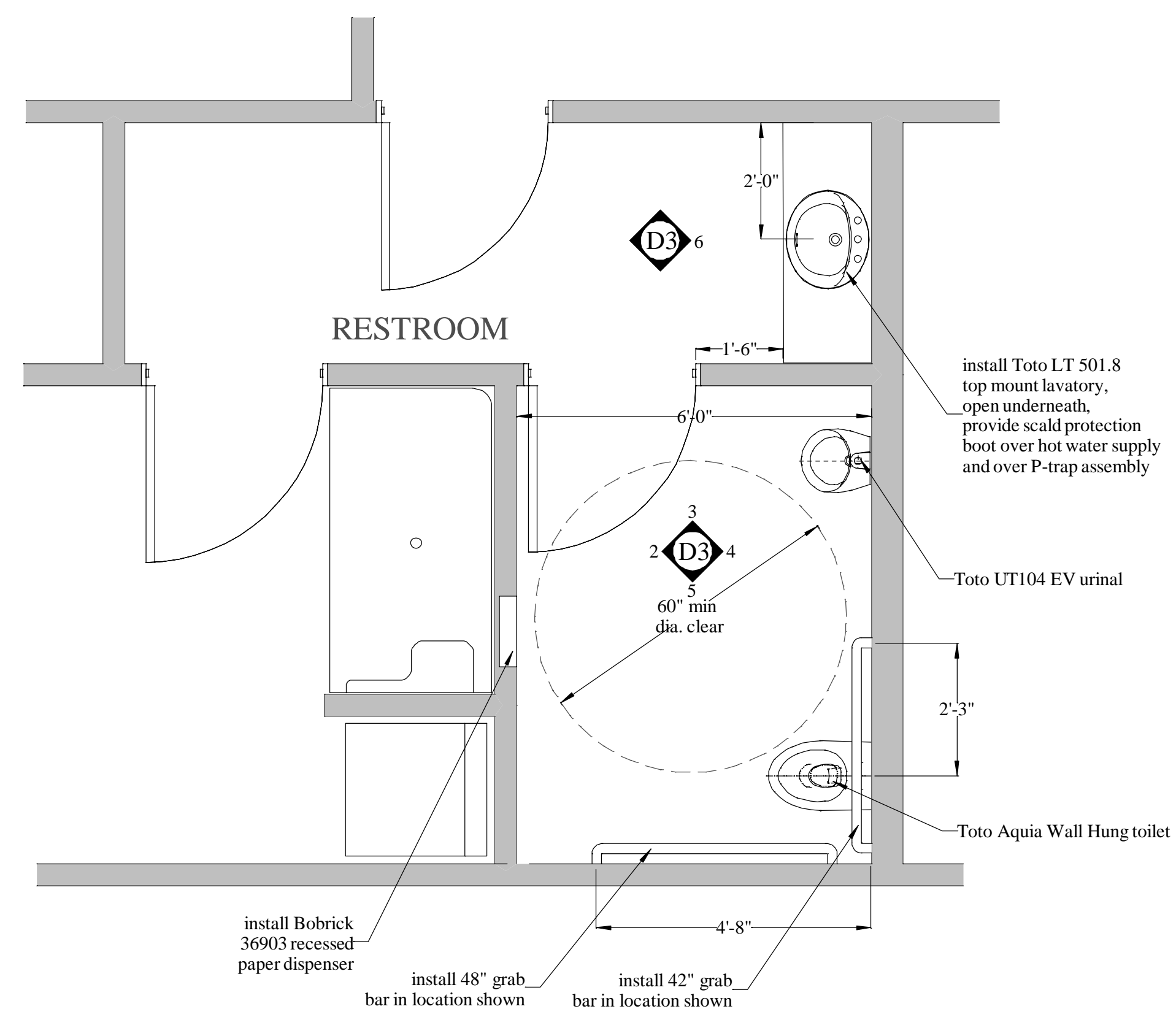
4 RESTROOM WEST ELEVATION



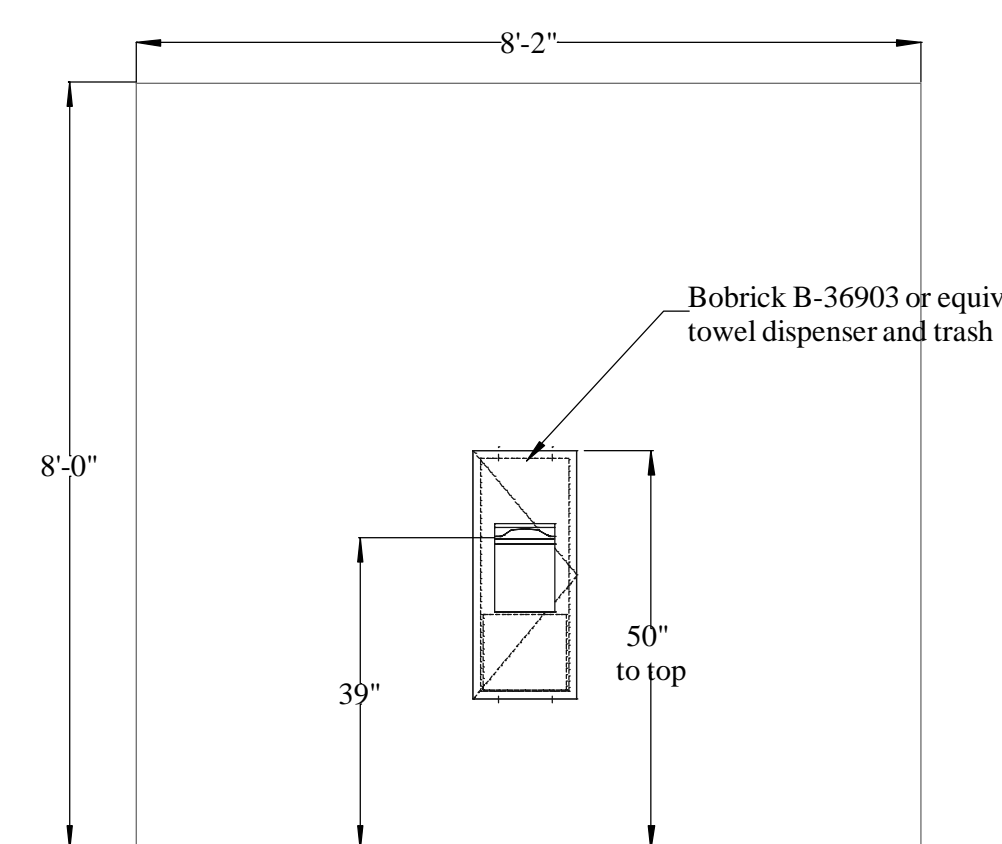
5 RESTROOM NORTH ELEVATION



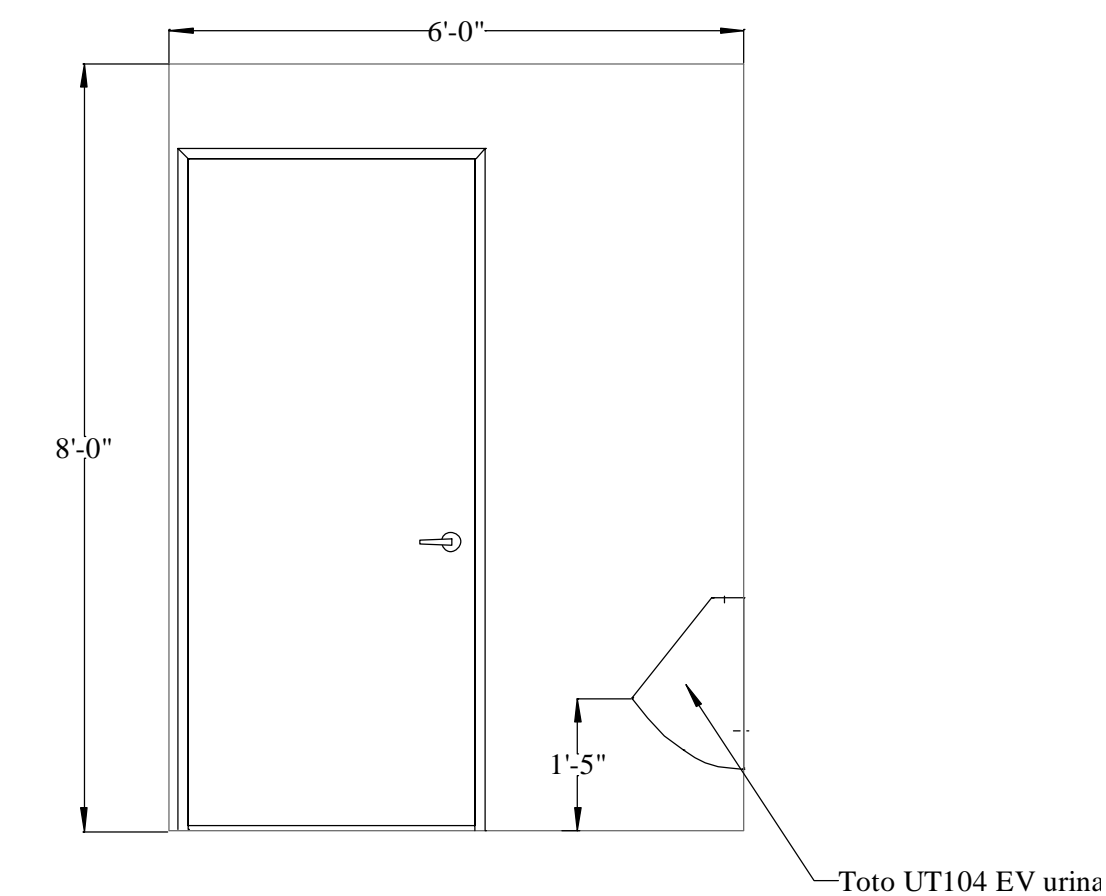
6 RESTROOM VANITY ELEVATION



1 RESTROOM PLAN



2 RESTROOM EAST ELEVATION



3 RESTROOM SOUTH ELEVATION

REVISIONS

NO. DATE

Date Issued

February 15, 2013

A 4.0

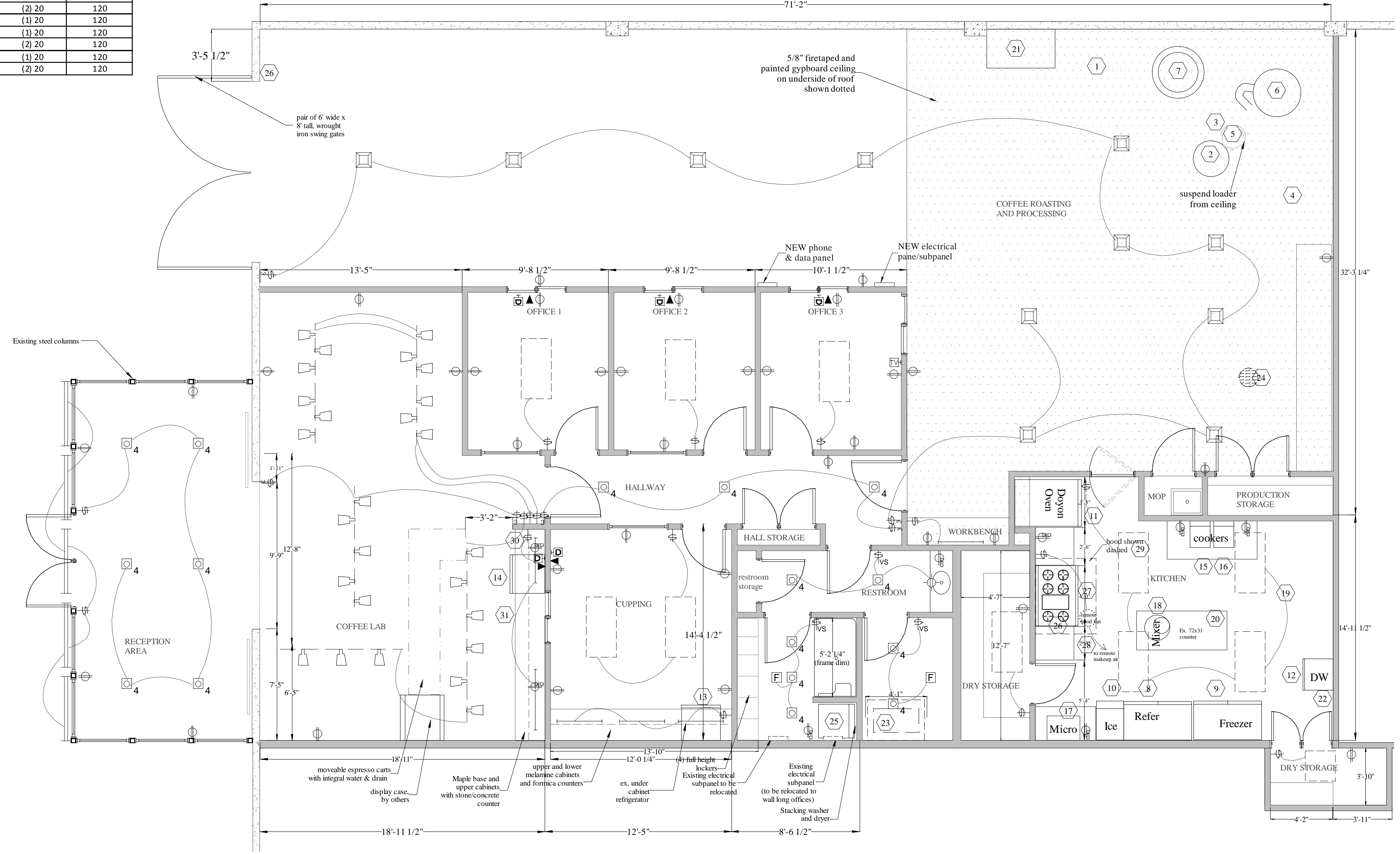
Scale: 1/4"=1'

PANEL BREAKER SCHEDULE						
Equipment #	Equipment or Function Name	Location	Electrical Requirements	Plug-in or Hardwired	Circuit Breaker Size (Amps)	Voltage
1	Weigh fill Bagger	south wall	7A@120V	plug in	20	120
2	Roaster	south west corner	10.5A@110V	plug into podium	N/A	120
3	Podium	roaster brains	(2) 20A 110V circuits	plug	(2) 20	120
4	De Stoner	next to roaster	10A@110V	plug	20	120
5	Coffee Loader	hangs above roaster	15A@110V	plug	20	120
6	Catalytic converter (Oxidizer)	attached to roaster	3.5A@120V	plug	20	120
7	Grinder	between roaster and bagger	3HP single phase 230V	plug	20	240
8	Turbo Air Refrigerator	kitchen	11.2A@110V	plug	20	120
9	Turbo Air Freezer	kitchen	10.5A@110V	plug	20	120
10	Scotsman Ice maker	kitchen	14A@115V	plug	20	120
11	Doyon baking oven	kitchen	17A@240V	plug	30	240
12	Moyer deibel dishwasher	kitchen	38A@230V	plug	50	240
13	Turbo Air refer under cab	cupping room	6.6A@115V	plug	20	120
14	Turbo Air refer under cab	coffee lab	6.6A@115V	plug	20	120
15	Tarrison induction cooker (#1)	kitchen	15A @ 208V	plug	20	240
16	Tarrison induction cooker (#2)	kitchen	15A @ 208V	plug	20	240
17	Microwave	kitchen	8A@120V	plug	20	120
18	Mixer	kitchen	8A@120V	plug	20	120
19	Three pot sink	kitchen	N/A	N/A	N/A	N/A
20	Roll around counters	kitchen	N/A	N/A	N/A	N/A
21	Counters	south wall, next to bagger	N/A	N/A	N/A	N/A
22	On Demand Water Heater	east wall of kitchen	4A@120v	plug	20	120
23	Forced Air Furnace	offices, cupping and lab	8A@120V	plug	20	120
24	Ex. Fan only -roof top AC	roasting area	10A@120V	hardwired	20	120
25	Stacked Washer & Dryer	Shower & Lockers	15A@120	plug	20	120
26	Ex. Roll Up door	Front of building	5A@120 TBV	plug	20	120
27	60" x 48" hood	kitchen	15A@110V	plug in	20	120
32	AC condenser for offices	Roof	27@220V (operating)	hardwired	40	220

MISC. LIGHTING & RECEPTACLES						
	Roasting Area Lighting	Roasting			(1) 20	120
	Office Lighting	Offices			(1) 20	120
	Coffee Lab lighting	coffee lab			(2) 20	120
	Bath and Kitchen lighting	Bath and Kitchen			(1) 20	120
	Exterior and Signage lighting	exterior			(1) 20	120
	Office receptacles	offices, cupping & coffee lab			(2) 20	120
	Workbench receptacles	workbench			(3) 20	120
	Misc. kitchen receptacles	kitchen			(2) 20	120

RED WHALE COFFEE MAJOR EQUIPMENT LIST							
Equipment #	Equipment Name	Location	Input BTU (if gas)	Electrical Requirements	Plug-in or Hardwired	Circuit Breaker Size (Amps)	Voltage
1	Weigh fill Bagger	south wall		7A@120V	plug in	20	120
2	Roaster	south west corner	63,000 BTU	10.5A@110V	plug into podium	N/A	120
3	Podium	roaster brains		(2) 20A 110V circuits	plug	(2) 20	120
4	De Stoner	next to roaster		10A@110V	plug	20	120
5	Coffee Loader	hangs above roaster		15A@110V	plug	20	120
6	Catalytic converter (Oxidizer)	attached to roaster	156,000 BTU	3.5A@120V	plug	20	120
7	Grinder	between roaster and bagger		3HP single phase 230V	plug	20	240
8	Turbo Air Refrigerator	kitchen		11.2A@110V	plug	20	120
9	Turbo Air Freezer	kitchen		10.5A@110V	plug	20	120
10	Scotsman Ice maker	kitchen		14A@115V	plug	20	120
11	Doyon baking oven	kitchen	65,000 BTU	17A@240V	plug	30	240
12	Moyer deibel dishwasher	kitchen		38A@230V	plug	50	240
13	Turbo Air refer under cab	cupping room		6.6A@115V	plug	20	120
14	Turbo Air refer under cab	coffee lab		6.6A@115V	plug	20	120
15	Tarrison induction cooker (#1)	kitchen		15A @ 208V	plug	20	240
16	Tarrison induction cooker (#2)	kitchen		15A @ 208V	plug	20	240
17	Microwave	kitchen		8A@120V	plug	20	120
18	Mixer	kitchen		8A@120V	plug	20	120
19	Three pot sink	kitchen		N/A	N/A	N/A	N/A
20	Roll around counters	kitchen		N/A	N/A	N/A	N/A
21	Counters	south wall, next to bagger		N/A	N/A	N/A	N/A
22	On Demand Water Heater	east wall of kitchen	200,000 BTU	4A@120v	plug in	20	120
23	Forced Air Furnace	offices, cupping and lab	100,000 BTU	8A@120V	plug in	20	120
24	Ex. Fan only -roof top AC	roasting area		10A@110V	hardwired	20	120
25	Stacked Washer & Dryer	Shower & Lockers	25,000 BTU	10A@110V	plug in	20	120
26	48" commercial gas range	kitchen	272,000 BTU	3.8A@110V	plug in	20	120
27	60" x 48" hood	kitchen		15A@110V	plug in	20	120
28	Fire supresion system	kitchen		N/A	N/A	N/A	N/A
29	Hand washing sink	kitchen		N/A	N/A	N/A	N/A
30	Hand washing sink	coffee lab		N/A	N/A	N/A	N/A
31	33" dishwashing sink	coffee lab		N/A	N/A	N/A	N/A
32	AC condenser for offices	Roof		27A@220V (operating)	hardwired	40	220

ELECTRICAL SYMBOLS	
DUPLICATE OUTLET	HOSE BIB
GFCI PROTECTED DUPLICATE OUTLET	GAS SUPPLY
DUPLICATE OUTLET, HALF HOT	ELECTRIC METER
220V CIRCUIT	FLUORESCENT FAN LIGHT COMBINATION
FLOOR OUTLET	TRACK LIGHT
SINGLE POLE SWITCH	FLOOR MTD/TELEPHONE JACK
THREE WAY SWITCH	LOW VOLTAGE WALL WASHER
CEILING MOUNTED LIGHT FIXTURE	LOW VOLTAGE SLOT TRIM
F HEAVY DUTY FAN BOX	4" LENS FIXTURE (SHOWER)
WALL MOUNTED LIGHT FIXTURE	6" CAN W/EYEBALL TRIM
DROP CORD LIGHT	THERMOSTAT
6" RECESSED LIGHT FIXTURE	
4" RECESSED LIGHT INCAND. FIXTURE	
4" LED RECESSED CAN	SP SUBPANEL
LED UNDERCABINET FIXTURE	TELEPHONE JACK
EXTERIOR RATED LED STRIP LIGHT	D DATA PORT
JUNCTION BOX	PLUMBING FITTINGS
SMOKE DETECTOR	AIR SUPPLY REGISTER
CHIME	WATER SUPPLY
TELEVISION	F EXHAUST FAN
DOOR BELL	OC OCCUPANCY SENSOR
C CARBON MONOXIDE DETECTOR	SP SPEAKER, CEILING OR WALL
LOW BAY LED LIGHT	VOLUME CONTROL
2X2 or 2x4 LED LIGHT	15W LED TRACK LIGHT HEAD



STRUCTURAL ENGINEERING BY:
 KENT ENGINEERING, INC.
 Robert Kent
 3608 Aaron Drive
 Santa Rosa, CA 95404
 ph: 707-526-7956
 fax: 707-526-9138

Red Whale Coffee Roastery
 169 Paul Drive
 San Rafael, CA 94903

ELECTRICAL PLAN & SCHEDULES

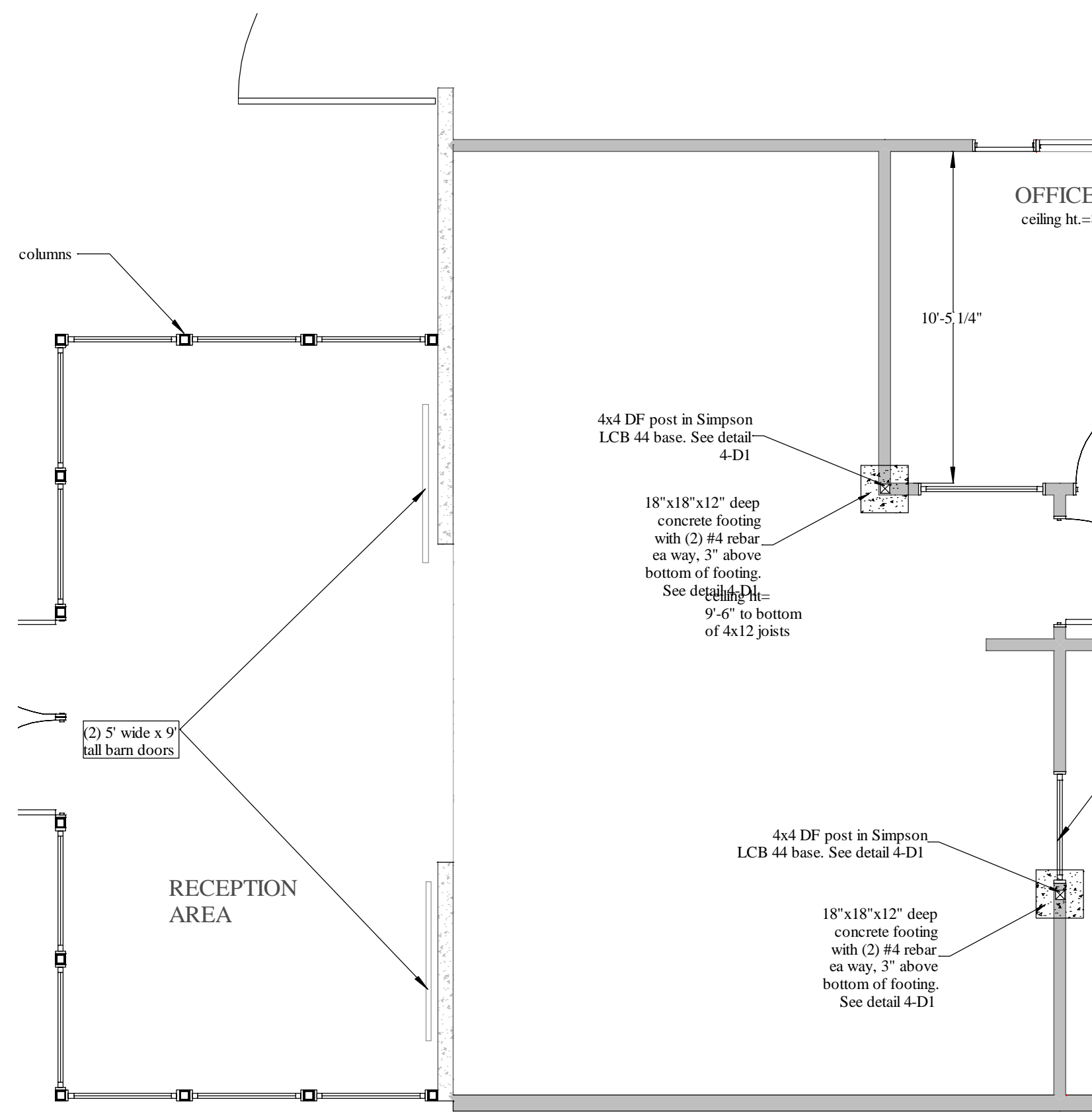
NO.	DATE	REVISIONS

Date Issued

February 15, 2013

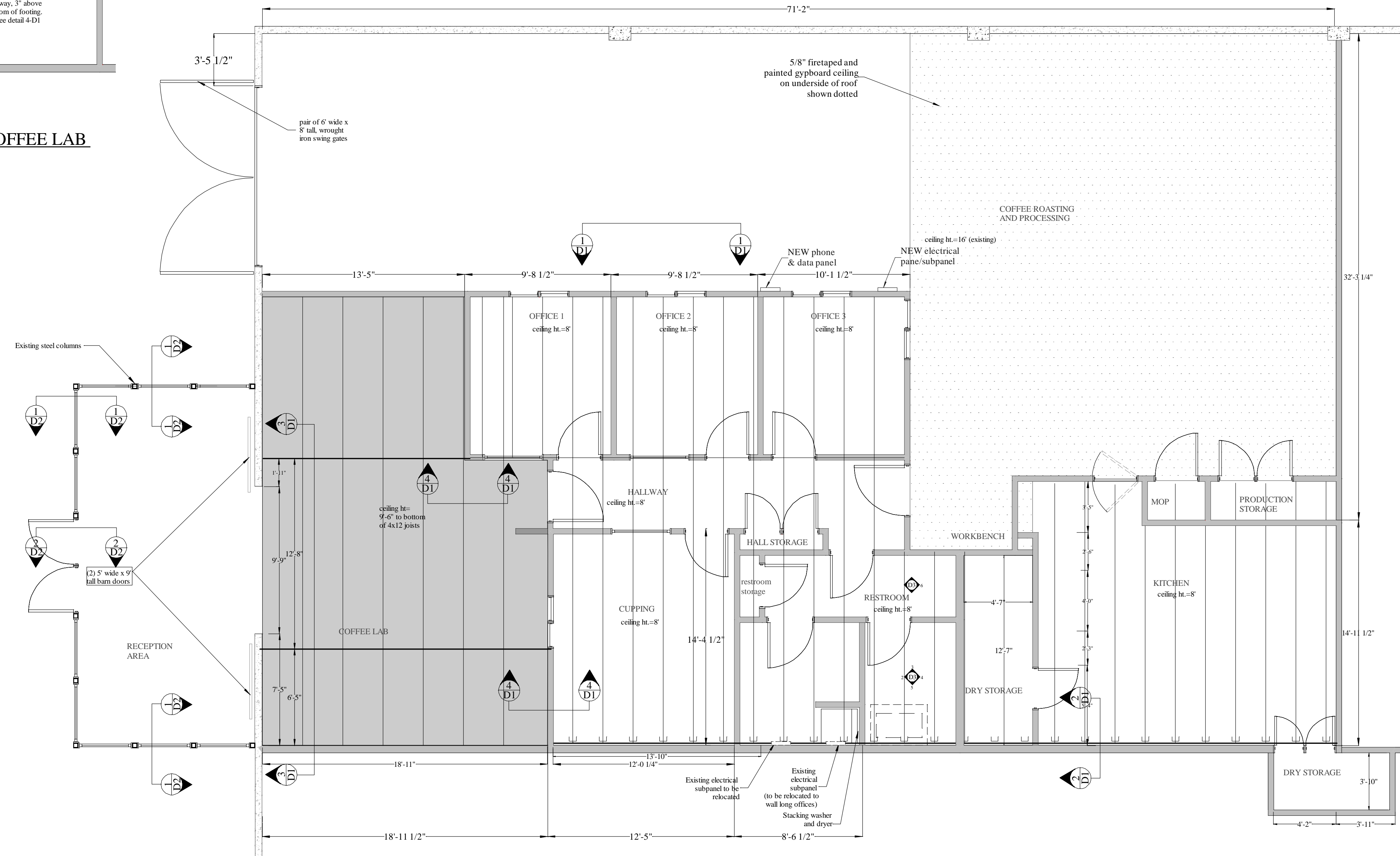
E1.0

Scale: 1/4"=1'



PARTIAL FOUNDATION PLAN AT COFFEE LAB

RED WHALE FINISH SCHEDULE											
	Coffee Roasting and Processing	Kitchen	Kitchen Storage (both)	Mop Room	Restroom	Hallways	Office 1, 2, 3	Misc. Closets	Cupping	Coffee Lab	Reception
ceiling height	existing	8'	8'	8'	8'	10' at main, 8' at side hallway	8'	8'	9'	10'	existing
ceiling finish	partial gyboard ceiling, see E1.0, firetaped and painted	5/8" gyboard, level 4 smooth, enamel painted	5/8" gyboard, level 4 smooth, enamel painted	5/8" gyboard, level 4 smooth, enamel painted	5/8" gyboard, level 4 smooth, enamel painted	5/8" gyboard, light texture, painted	5/8" gyboard, light texture, painted	5/8" gyboard, light texture, painted	5/8" gyboard, light texture, painted	painted MDO plywood above sand blasted beams	5/8" gyboard, level 4, enamel painted
wall finish	painted concrete & gypboard level 4 smooth, painted enamel	FRP from floor to ceiling over 5/8" gyboard	5/8" gyboard, level 4 smooth, enamel painted	FRP from floor to ceiling	5/8" gyboard, level 4 smooth, enamel painted	5/8" gyboard, light texture, painted	5/8" gyboard, light texture, painted	5/8" gyboard, light texture, painted	5/8" gyboard, light texture, painted	5/8" gyboard, level 4 smooth, enamel painted	5/8" gyboard, level 4 smooth, enamel painted
floor finish	existing concrete, cleaned and sealed	100% Epoxy coated floor, turned up 6" at walls	100% Epoxy coated floor, turned up 6" at walls	100% Epoxy coated floor, turned up 6" at walls	100% Epoxy coated floor, turned up 6" at walls	stained concrete with clear protective coating	stained concrete with clear protective coating	stained concrete with clear protective coating	stained concrete with clear protective coating	stained concrete with clear protective coating	stained concrete with clear protective coating
window type											
baseboard	vinyl	6" epoxy	6" epoxy	6" epoxy	6" epoxy	vinyl	vinyl	vinyl	vinyl	wood	wood
door type						see door schedule					
door casing						see door schedule-integral hollow metal casing & frame					
door hardware						see door schedule for hardware					
cabinetry or casework	none	stainless by owner	stainless by owner	none	counter top only, ADA approved	none	by owner	birch or maple plywood, finished clear	Melamine base and upper cabinets	Maple shaker door with melamine interiors	none



CEILING FRAMING PLAN AT OFFICES, CUPPING AND COFFEE LAB

STRUCTURAL ENGINEERING BY:

KENT ENGINEERING, INC.
 Robert Kent
 3608 Aaron Drive
 Santa Rosa, CA 95404
 ph: 707-526-7956
 fax: 707-526-9138

Red Whale Coffee Roastery
 169 Paul Drive
 San Rafael, CA 94903

PARTIAL FOUNDATION & CEILING PLAN

REVISIONS

NO. DATE

Date Issued

February 15, 2013

S 2

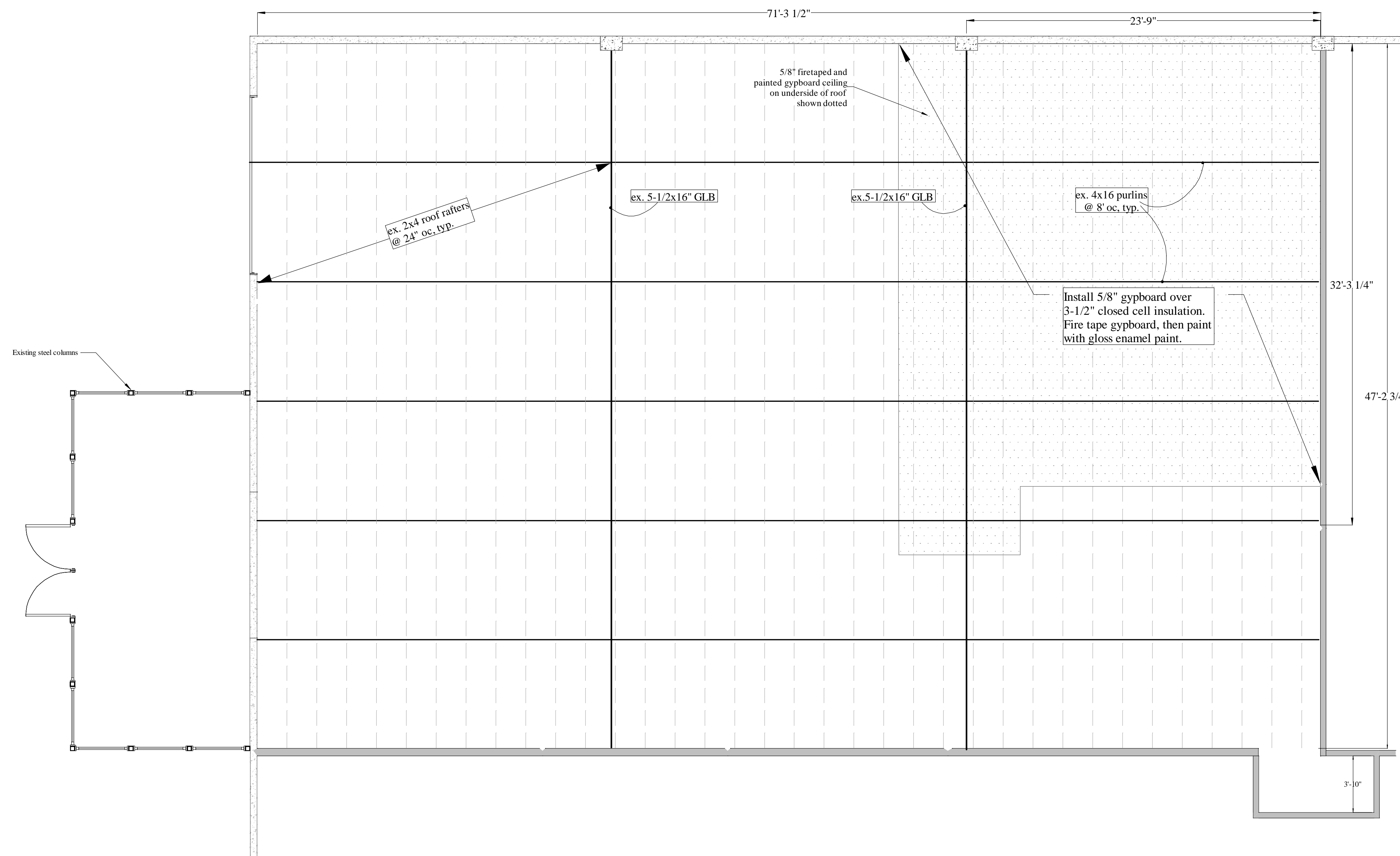
Scale: 1/4"=1'

STRUCTURAL
ENGINEERING BY:

KENT ENGINEERING, INC.
Robert Kent
3608 Aaron Drive
Santa Rosa, CA 95404
ph: 707-526-7956
fax: 707-526-9138

Red Whale Coffee Roastery
169 Paul Drive
San Rafael, CA 94903

EX. ROOF
FRAMING &
INSULATION
PLAN



REVISIONS Δ

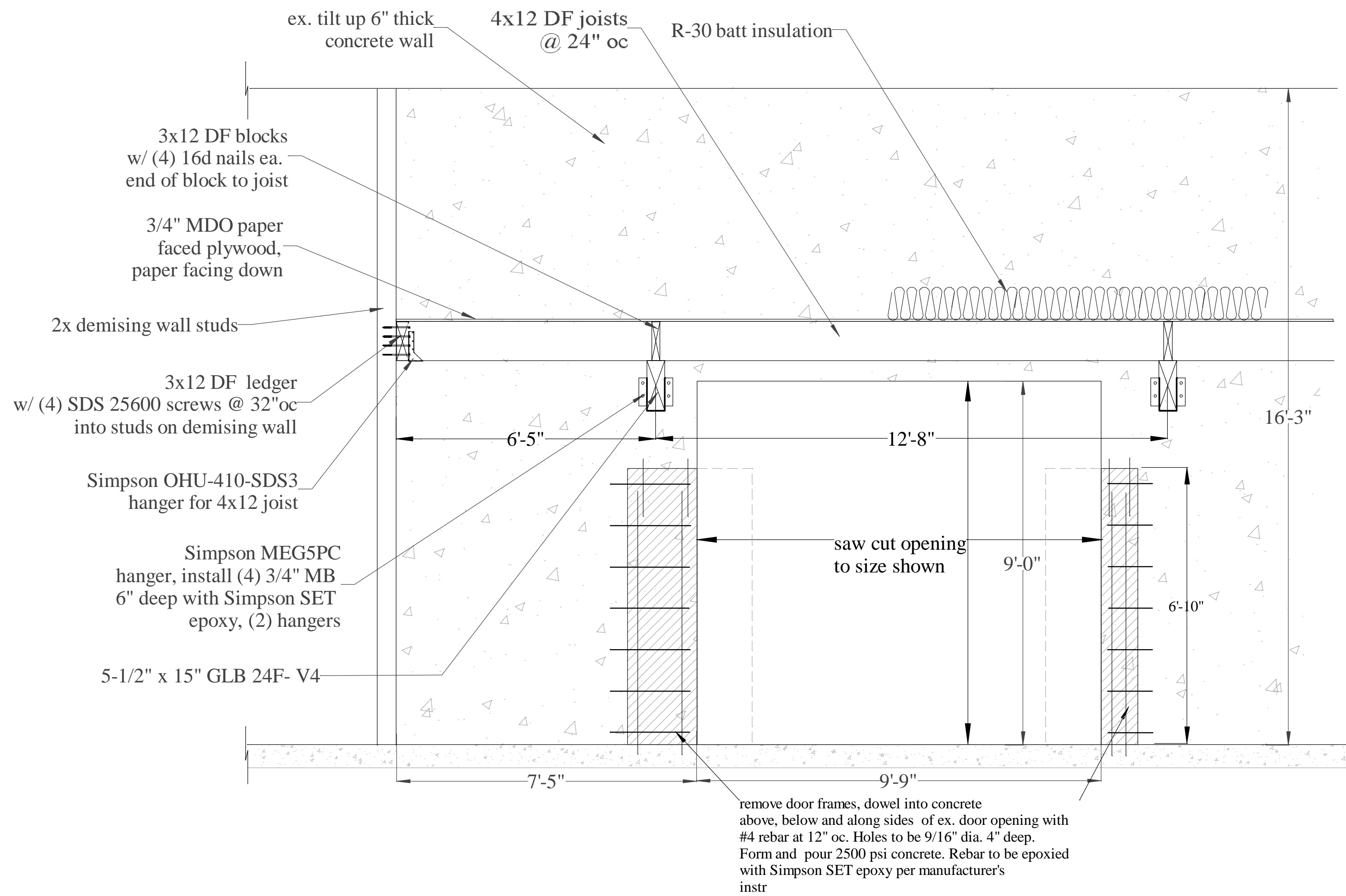
NO. DATE

Date Issued

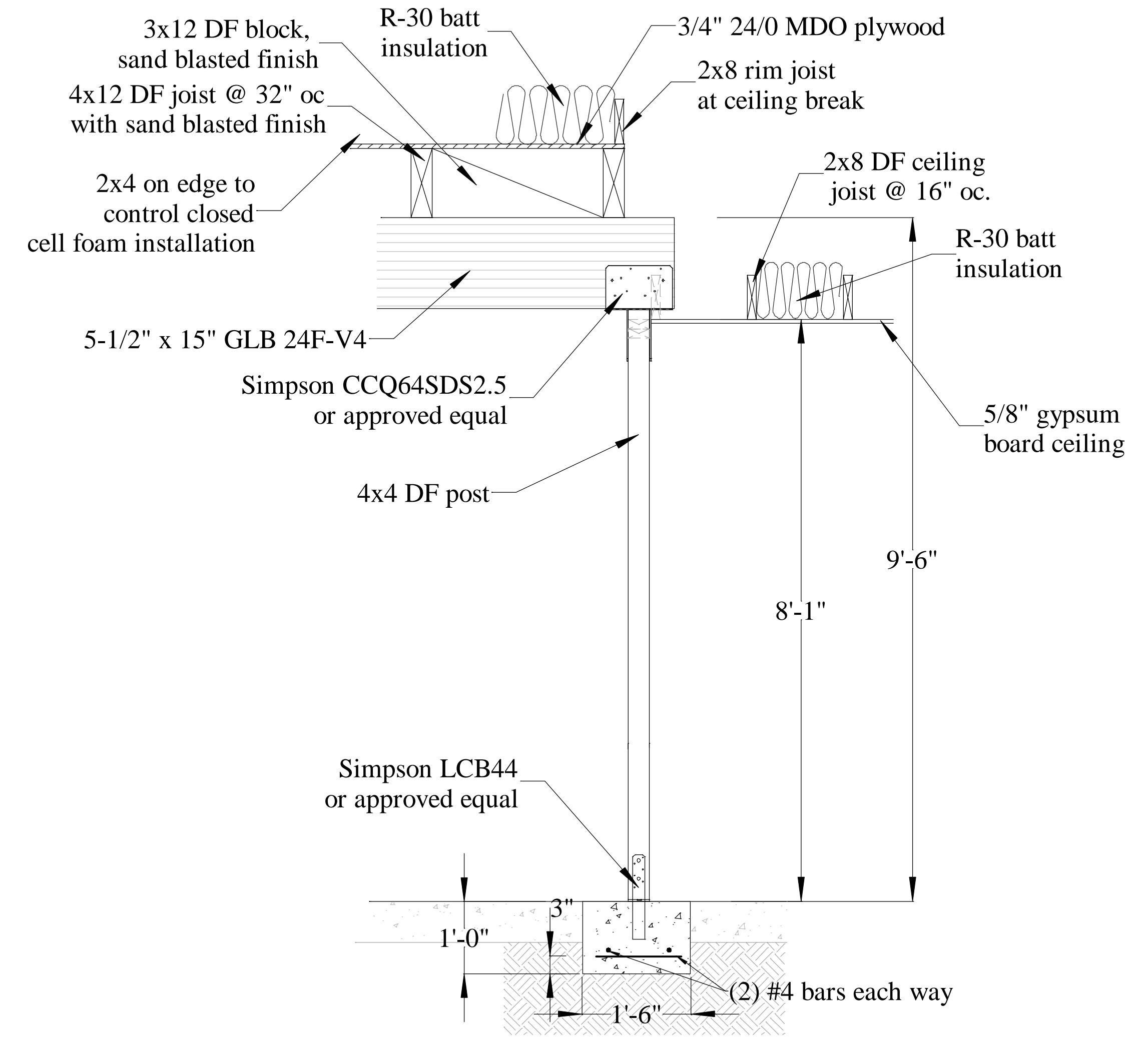
February 15, 2013

S 3

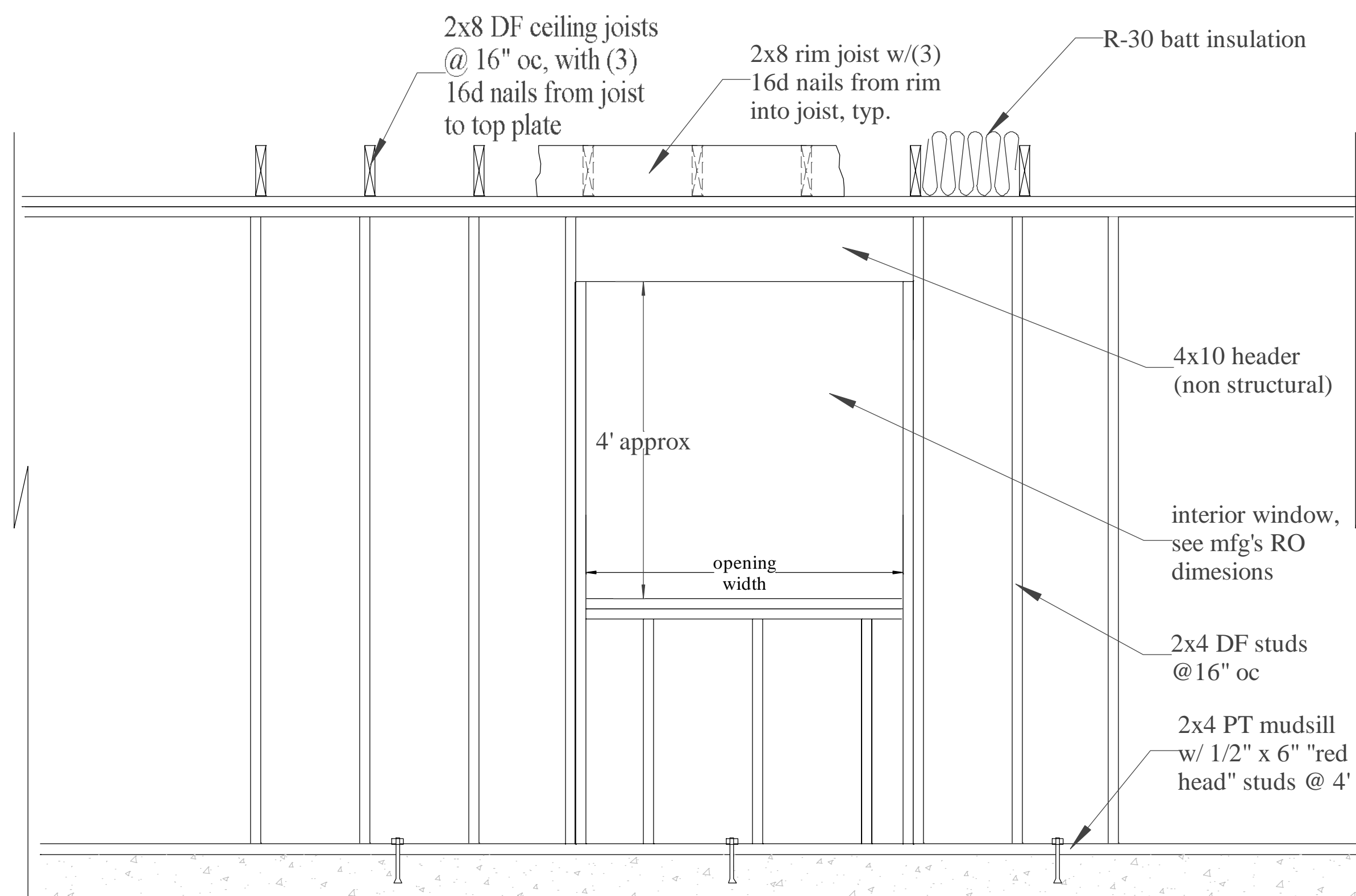
Scale: 1/4"=1'



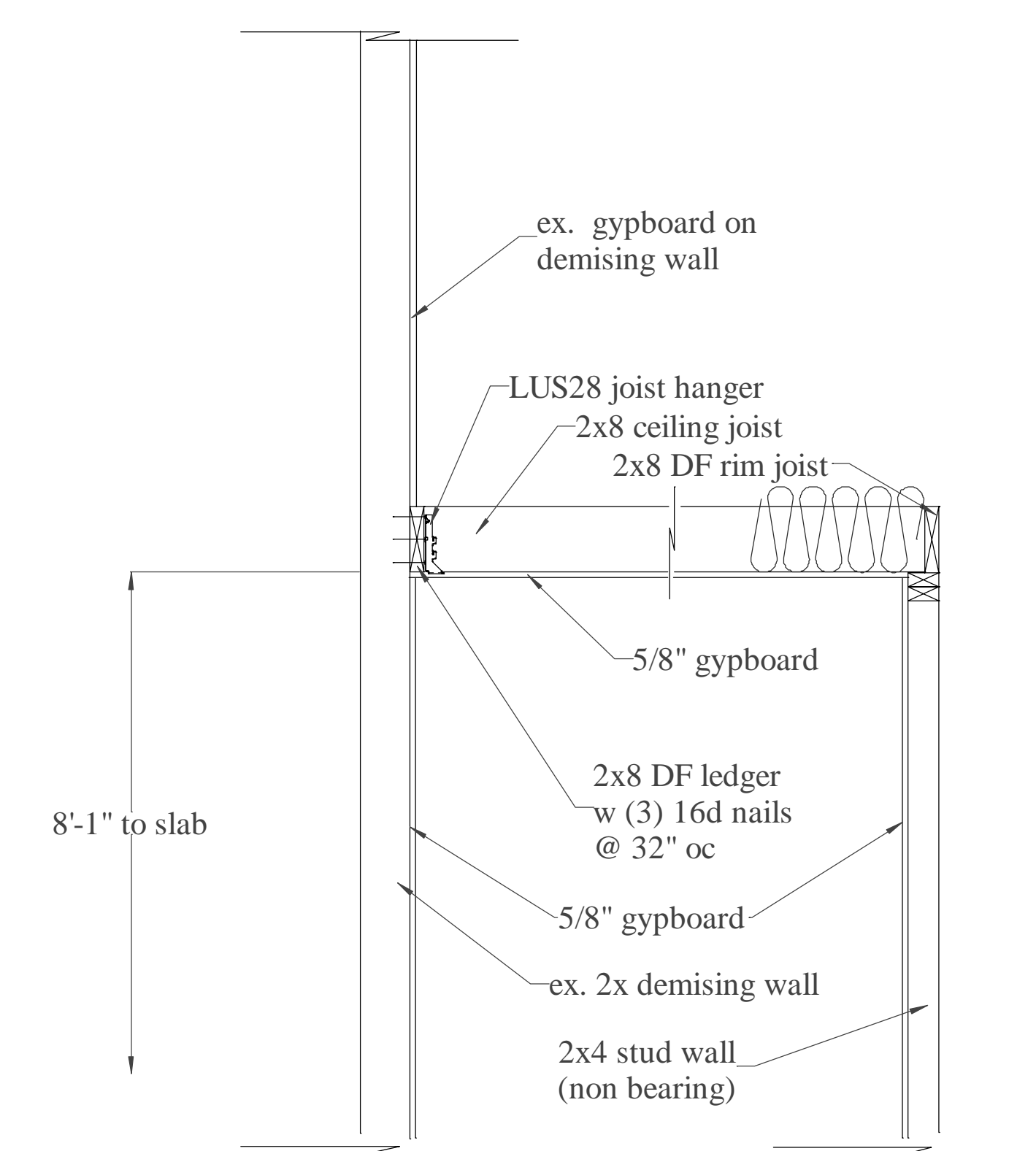
3 CEILING DETAIL AT COFFEE LAB



4 FOUNDATION AND GLULAM BEAM



1 TYPICAL PARTITION WALL FRAMING



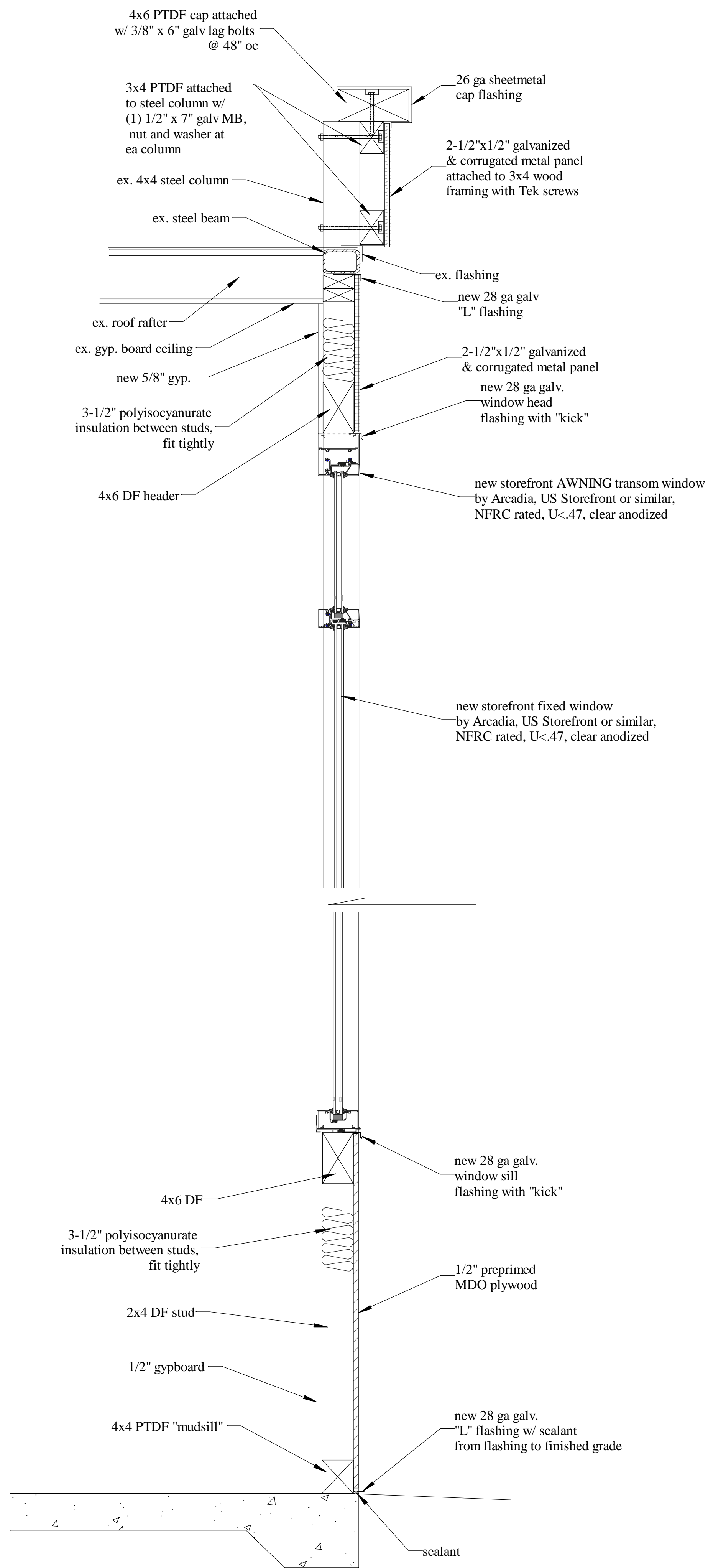
2 CEILING JOIST FRAMING/LEDGER

NO.	DATE	REVISIONS

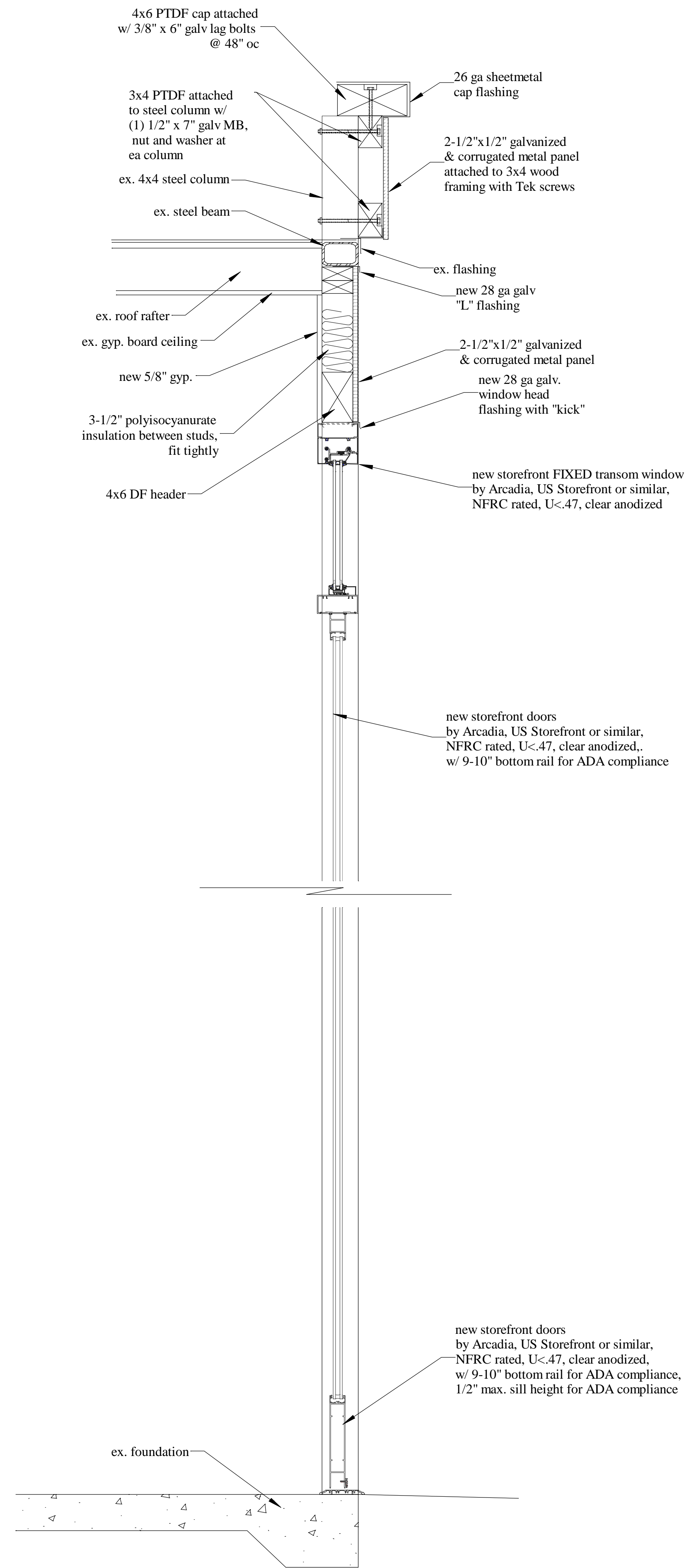
Date Issued
 February 15, 2013

D 1

Scale: 1/4"=1'



1 STOREFRONT GLAZING DETAILS AT WINDOW



2 STOREFRONT GLAZING DETAILS AT DOOR

STRUCTURAL
 ENGINEERING BY:

KENT ENGINEERING, INC.
 Robert Kent
 3608 Aaron Drive
 Santa Rosa, CA 95404
 ph: 707-526-7956
 fax: 707-526-9138

Red Whale Coffee Roastery
 169 Paul Drive
 San Rafael, CA 94903

DETAILS

NO.	DATE	REVISIONS

Date Issued
 February 15, 2013

D 2

Scale: 1/4"=1'